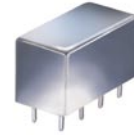


Plug-In Frequency Mixer

SRA-3MH+

Level 13 (LO Power +13 dBm) 0.025 to 200 MHz



CASE STYLE: A01
PRICE: \$21.20 ea. QTY (1-9)

+ RoHS compliant in accordance with EU Directive (2002/95/EC)

The +Suffix has been added in order to identify RoHS Compliance. See our web site for RoHS Compliance methodologies and qualifications.

Maximum Ratings

Operating Temperature	-55°C to 100°C
Storage Temperature	-55°C to 100°C
RF Power	200mW
IF Current	40mA

Pin Connections

LO	8
RF	1
IF	3,4 [^]
GROUND	2,5,6,7
CASE GROUND	2

[^] pins must be connected together externally

Features

- excellent conversion loss, 4.77 dB typ.
- high L-R isolation, 45 dB typ. L-I isolation, 40 dB typ.
- rugged welded construction
- hermetic

Applications

- VHF
- defense & federal communications
- FM broadcast radio

Electrical Specifications

FREQUENCY (MHz)		CONVERSION LOSS (dB)				LO-RF ISOLATION (dB)						LO-IF ISOLATION (dB)					
LO/RF	IF	Mid-Band		Total	L		M		U		L		M		U		
f_L - f_U		\bar{X}	σ	Max.	Max.	Typ.	Min.	Typ.	Min.	Typ.	Min.	Typ.	Min.	Typ.	Min.	Typ.	Min.
.025-200	DC-200	4.77	.07	7.5	8.5	60	50	45	35	35	25	45	35	40	30	30	20

1 dB COMP.: +9 dBm typ.

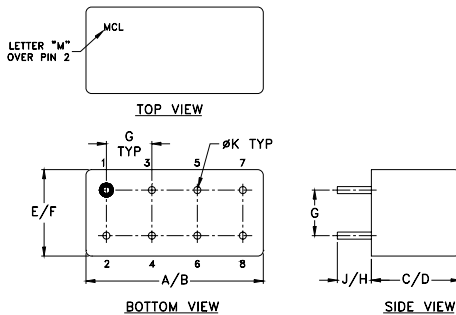
L = low range [f_L to $10 f_L$]

m = mid band [$2 f_L$ to $f_U/2$]

M = mid range [$10 f_L$ to $f_U/2$]

U = upper range [$f_U/2$ to f_U]

Outline Drawing



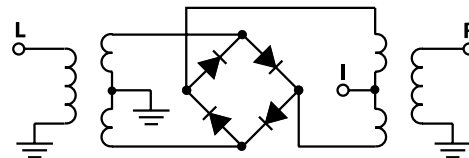
Outline Dimensions (inch/mm)

A	B	C	D	E	F
.770	.800	.385	.400	.370	.400
19.56	20.32	9.78	10.16	9.40	10.16
G	H	J	K	wt	
.200	.20	.14	.031		grams
5.08	5.08	3.56	0.79		5.2

Typical Performance Data

Frequency (MHz)		Conversion Loss (dB)	Isolation L-R (dB)	Isolation L-I (dB)	VSWR RF Port (:1)	VSWR LO Port (:1)
RF	LO	LO +13dBm	LO +13dBm	LO +13dBm	LO +13dBm	LO +13dBm
0.025	30.025	7.47	73.00	68.27	1.27	2.12
5.00	35.00	4.97	68.46	58.54	1.25	2.13
20.00	50.00	5.12	61.10	56.96	1.24	2.18
28.59	58.59	5.10	58.49	56.16	1.23	2.14
35.74	65.74	5.10	55.30	54.57	1.22	2.11
42.88	72.88	5.07	53.39	53.33	1.21	2.12
50.00	80.00	5.05	51.26	51.58	1.20	2.09
64.30	94.30	5.00	48.21	48.64	1.18	2.06
121.44	91.44	4.95	40.55	41.10	1.17	2.03
128.58	98.58	5.04	39.34	40.10	1.16	2.03
135.72	105.72	5.04	39.85	40.26	1.14	1.99
142.87	112.87	4.99	40.78	40.74	1.13	2.02
150.01	120.01	5.06	40.53	40.11	1.12	2.01
157.15	127.15	5.11	39.65	39.23	1.09	2.03
164.29	134.29	5.14	38.33	38.13	1.07	2.10
171.43	141.43	5.21	36.83	37.20	1.04	2.10
178.58	148.58	5.29	35.77	36.86	1.03	2.07
185.72	155.72	5.36	35.84	37.45	1.02	2.05
192.86	162.86	5.42	36.35	38.14	1.02	2.07
200.00	170.00	5.45	36.17	38.15	1.12	2.19

Electrical Schematic



Mini-Circuits®
ISO 9001 ISO 14001 CERTIFIED

ALL NEW
minicircuits.com

P.O. Box 350166, Brooklyn, New York 11235-0003 (718) 934-4500 Fax (718) 332-4661 For detailed performance specs & shopping online see Mini-Circuits web site



The Design Engineers Search Engine Provides ACTUAL Data Instantly From MINI-CIRCUITS At: www.minicircuits.com

RF/IF MICROWAVE COMPONENTS

REV. A
M98898
SRA-3MH
DJ/TD/CP/AM
061211
Page 1 of 2

